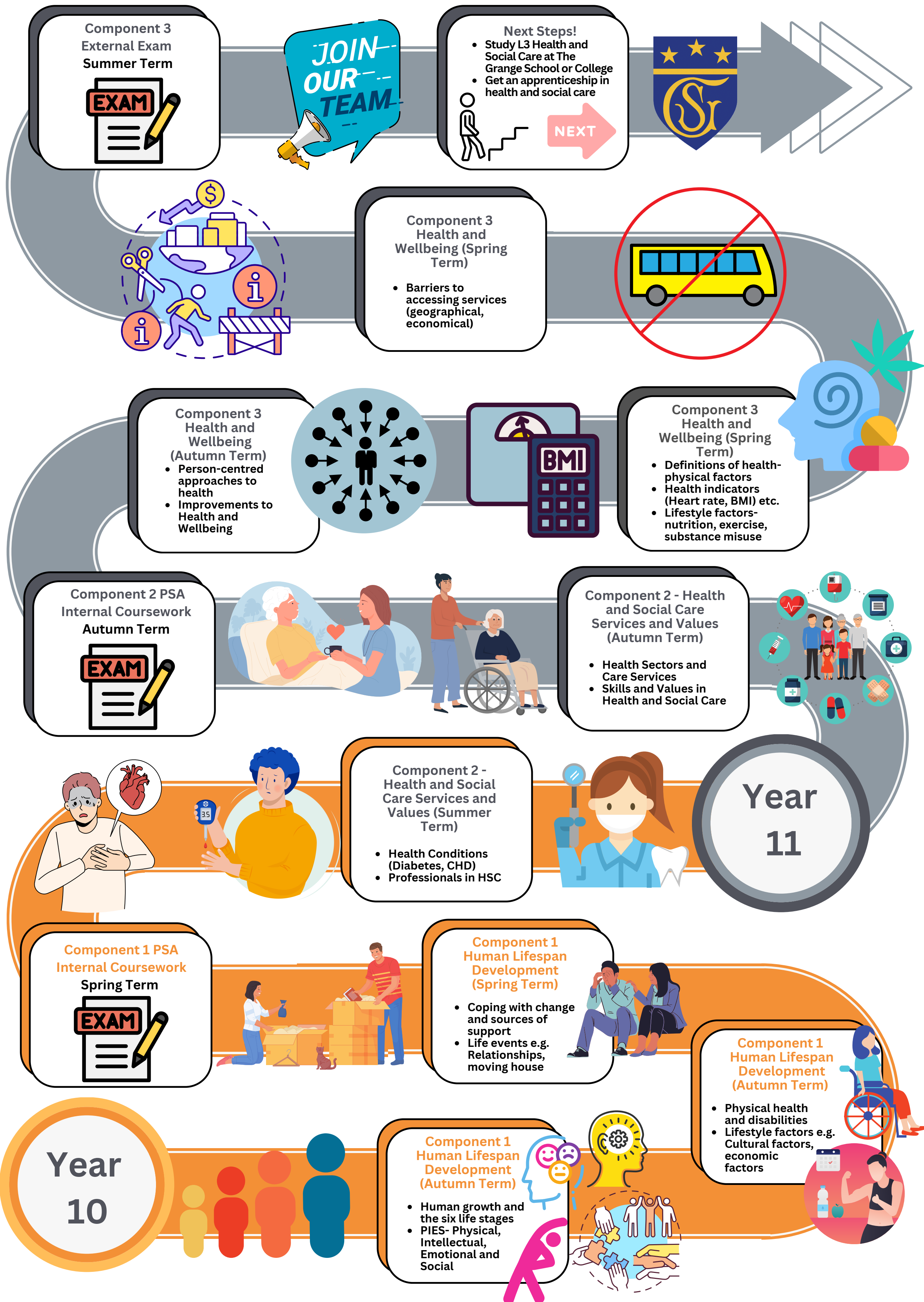


Health and Social Care BTEC Level 2 Learning Journey



Year 11 Overview

Students will synoptically use knowledge from Year 10 and will further investigate the health and social care sectors by applying their knowledge to the various health and care sectors that provide health and care. The focus of the course shifts to a more applied approach and students will develop research and analytical skills in order to complete the external exam and coursework to a high standard.

Year 10 Overview

Students will be developing an understanding of key healthcare terms and principles and apply knowledge of these to the life stages and to life events. They will gain underpinning knowledge of PIES and the integration of these within every aspect of healthcare. Students will develop their essay writing skills in order to gain a holistic view of the subject in preparation for the first coursework assessment.

"The preservation of health is easier than the cure of disease."