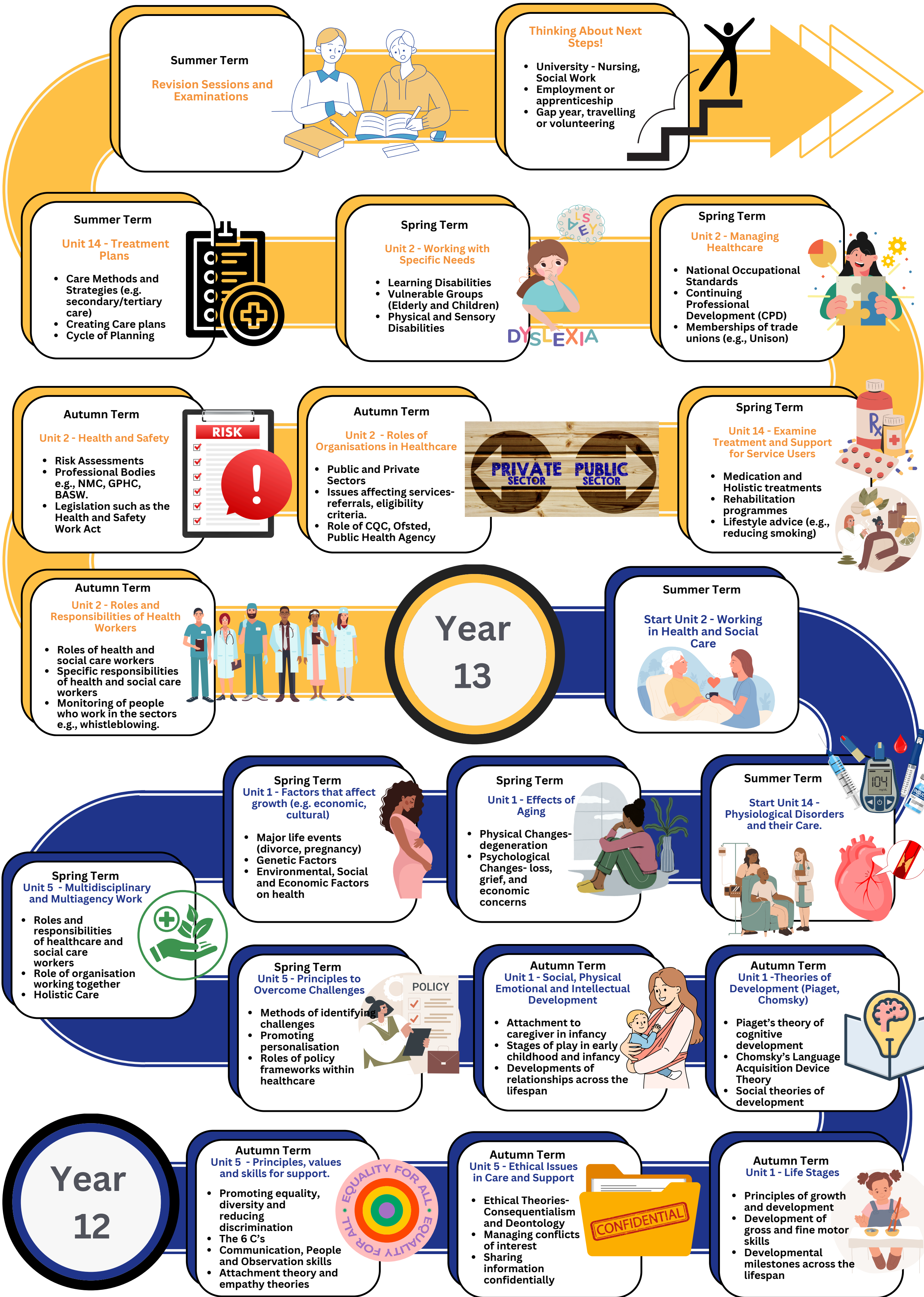


# Health and Social Care BTEC Level 3 Learning Journey



**Year 13 Overview**

Students will further their knowledge in Year 13 by evaluating using an applied approach. They will use their studies from the previous year to apply psychological and physiological disorders within their coursework unit. Alongside they will carry out studies in working in health and social care by researching and evaluating roles within the sector and applying this to their examination unit via the use of short questions and longer written analytical essays.

**Year 12 Overview**

In Year 12, students develop foundational knowledge essential to understanding the health and social care sector. The curriculum focuses on key principles such as human growth and development, the impact of health and social care services, and the importance of effective communication and safeguarding practices. Through a combination of theoretical learning and mock examinations, learners build the competence required to

*"The best way to find yourself is to lose yourself in the service of others" Gandhi*