

# Bromcom Student Portal and App



The Grange School uses Bromcom for managing and communicating a wide range of data including:

- Student Timetables
- Attendance Data
- Behaviour Points
- Exam Timetables
- Exam Results
- Assessment Reports

Students can access their data via the *Bromcom Student Portal* website and/or the *Bromcom Student App*.

## Bromcom Student Portal Website

To login to the *Bromcom Student Portal*, follow the steps below:

1. Visit <https://www.bromcomvle.com>
2. Click the *Login with Microsoft Account* button
3. Enter your **full school email address** (this is your **username** plus **@we-can.org.uk**)
4. Enter your school password

## Bromcom Student App

Follow the guide below for setting up the *Bromcom Student App* on a compatible iOS or Android smartphone.

1. Download and install the **Bromcom Student App** from the app store for your device

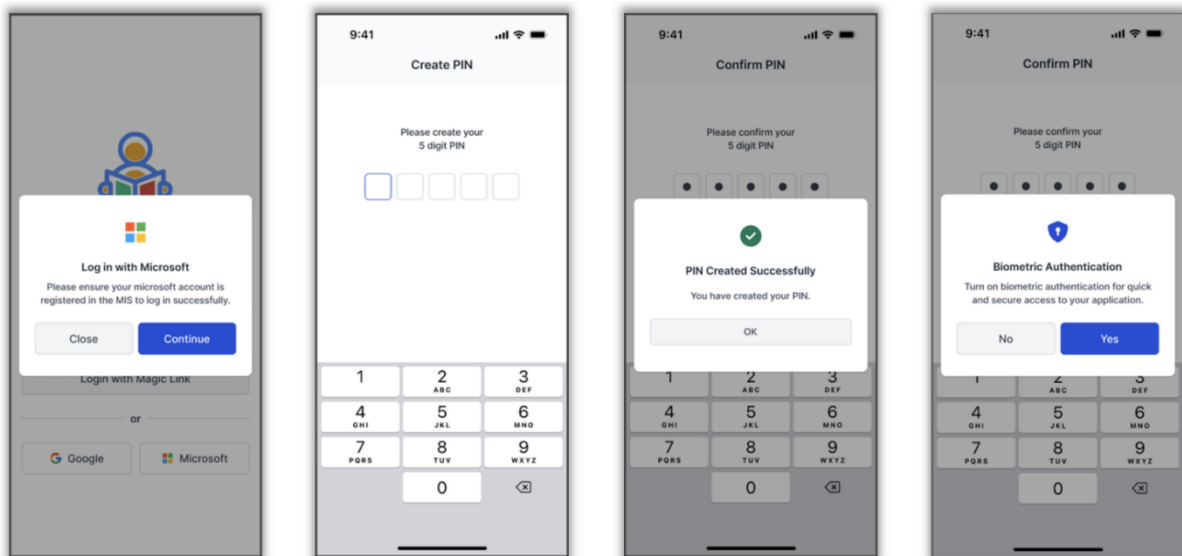
[Bromcom Student App for Apple iOS devices](#)

[Bromcom Student App for Google Android devices](#)

2. Once installed, open the *Bromcom Student App*.
3. Tap **Microsoft**, then *Continue*. You will be redirected to the Microsoft sign-in page to enter your credentials.
4. Sign-in with your school email address and password.

*Reminder:* Your school email address is your **username** plus **@we-can.org.uk**

5. **Create** a **5-digit PIN**, then re-enter it to confirm.
6. A **confirmation** message will appear once your PIN has been created successfully. Tap **OK**.
7. If your phone supports biometric authentication (fingerprint or facial recognition), select **YES** when asked if you want to turn on biometric authentication.



After you have completed this process, you'll be able to access the *Bromcom Student App* using either the 5-digit PIN you created in step 5, or by using biometric authentication (if enabled on your device).